

## KINGS CROSS STATION ROOF SURVEY

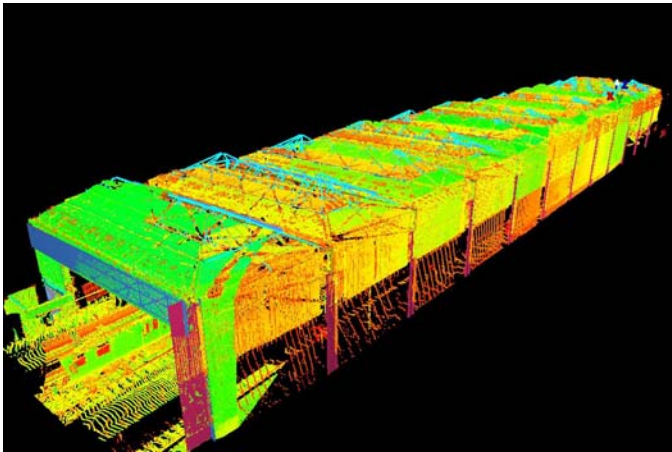
- using 3D Laser Scanning



Scott Wilson required the roof over platforms 9 - 11 in Kings Cross Station to be surveyed to capture key dimensional data including all heights and spans, spacing and sizes of members, column support locations and cladding material.

ScanTech International having won the project competitively, undertook the survey and produced a 3D-outline model and 2D GA's in AutoCAD format. The survey was referenced back to new/existing Permanent Ground Markers to an accuracy of  $\pm 5\text{mm}$ .

The work was also carried out with no disruption to the station or the trains and completed in one six hour night shift with the 3D model and point cloud animation being delivered just 10 days later



Point Cloud of the Roof Sections

3D Model of the Roof over  
Platforms 9-11 of the Station

