

Macclesfield Tunnel

- using 3D Laser Scanning

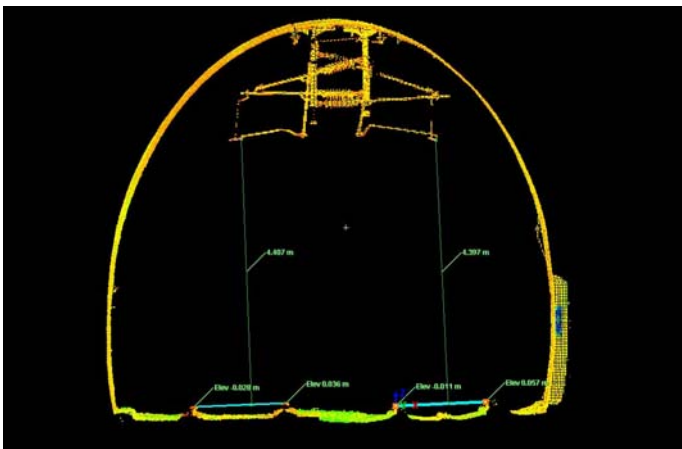


Edmund Nuttall required detailed profiles of the tunnel to determine whether freight trains could be diverted through this line when the Crewe line is closed for maintenance. Numerous traditional topographical surveys had previously been undertaken but none provided the required information for the freight gauging exercise.

Edmund Nuttall chose ScanTech to carry out laser scans of the tunnel and to produce 2D sectional CAD drawings at each OLE support structure. This information was then input into the Clearroute software package.

The work was carried out in a three-hour possession for the whole 315m length including the Portals at both ends.

The sectional drawings were produced three days later including an animated “drive through” the tunnel and accurate to the 5mm required.



Section through the tunnel at the OLE Stanchion

Point-cloud showing Macclesfield end of the Tunnel

