

## PADDINGTON SIGNAL & OLE STRUCTURES

- using 3D Laser Scanning

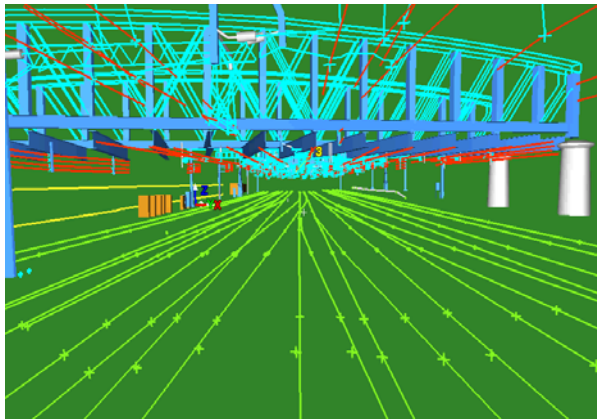


Atkins Rail required accurate dimensional data for 3 signal gantries and the OLE structures 100m either side of each signal just outside Paddington Station on a 6-track section of the rail. A road overbridge was also included in the survey

Possessions are very difficult to obtain but one area had sufficient space in the CESS to allow the information to be captured in a separated green zone. As the possessions had taken some 6 months to arrange any work that could be undertaken in a separated green zone was a significant factor

ScanTech captured the dimensional details to an accuracy of  $\pm 5\text{mm}$ , for the three 6 track areas in a total of 12 hours.

An outline 3 model was produced primarily to show the as-built positions of the signals but also to help assess the sighting of the signals.



**3D CAD Models of OLE & Rail**

